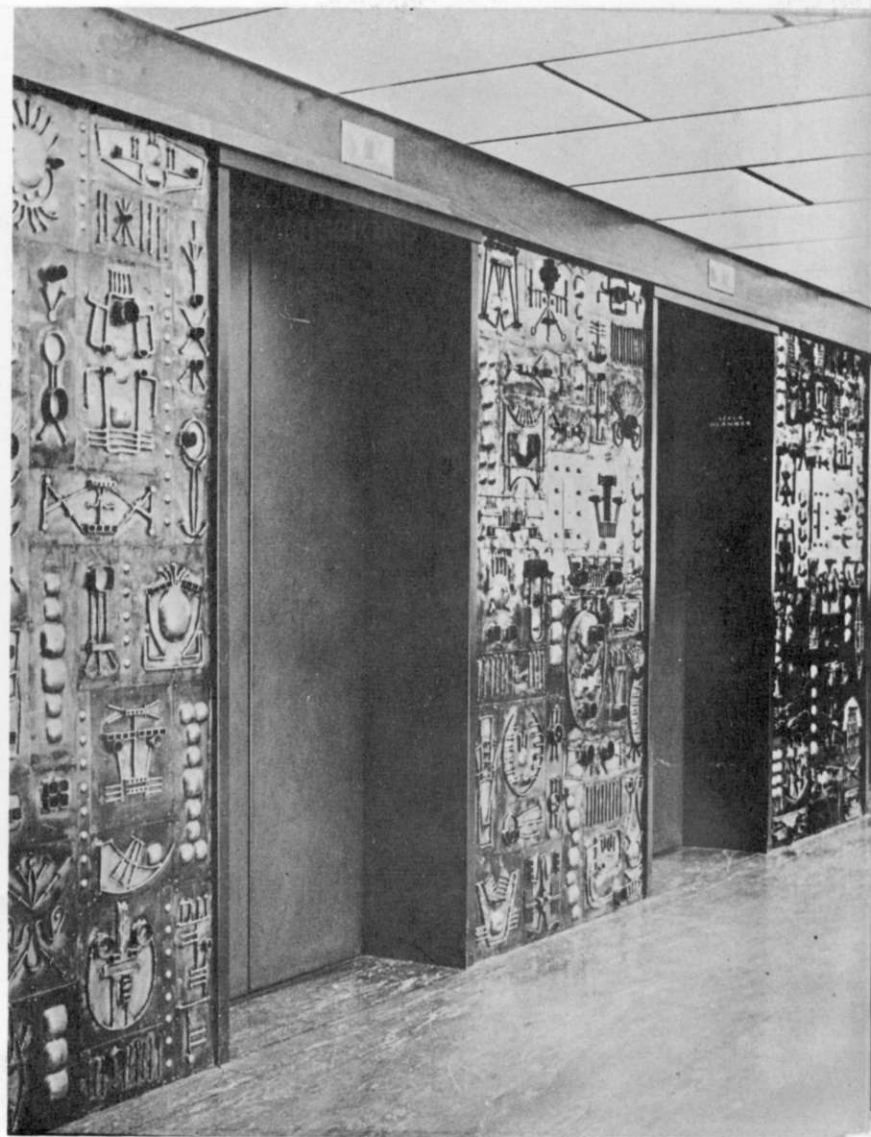


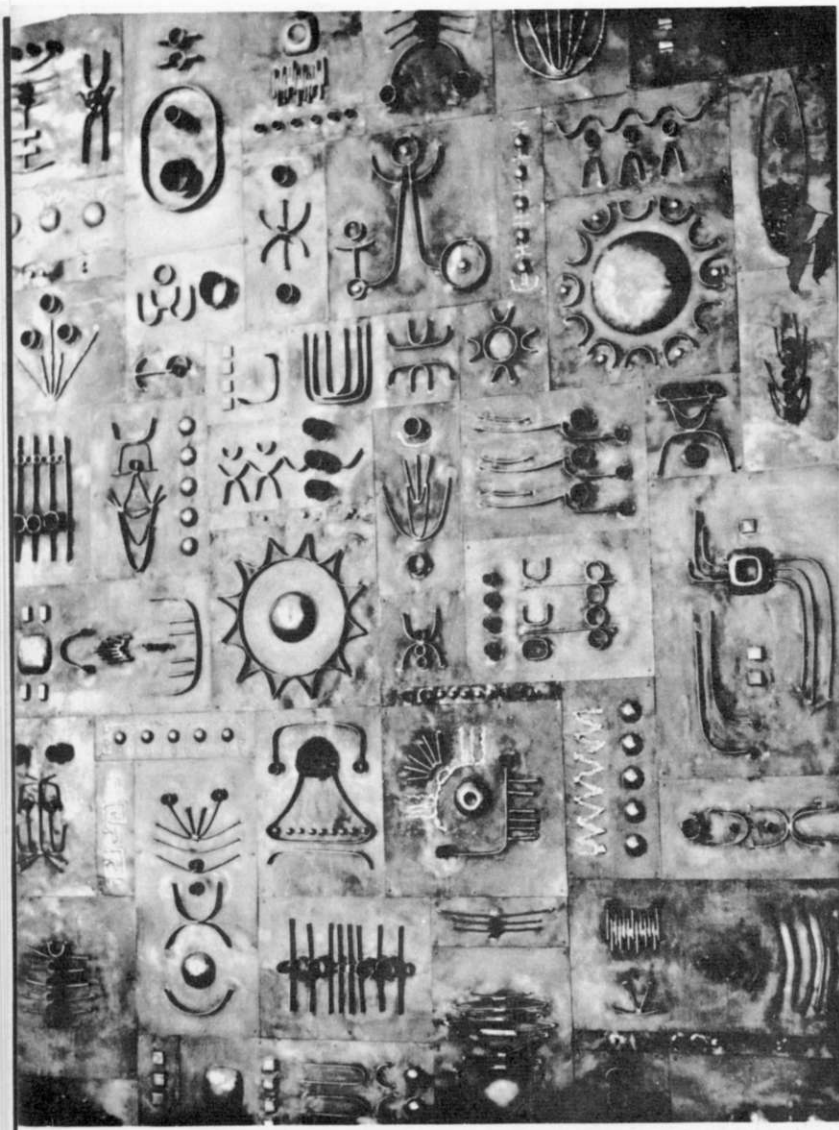
ARCHITECTURAL
COMMISSIONS

Mural, Netherlands Bank Building,
Johannesburg, 1963



8 panels, entrance foyer, Santam Buildings,
Johannesburg, 1965





Wall panel and door pulls, 101 Gallery, Johannesburg, 1965

Screen in entrance foyer and door handles, Cape Towers, Johannesburg, 1965

Panel, Rosebank library, Johannesburg, 1965

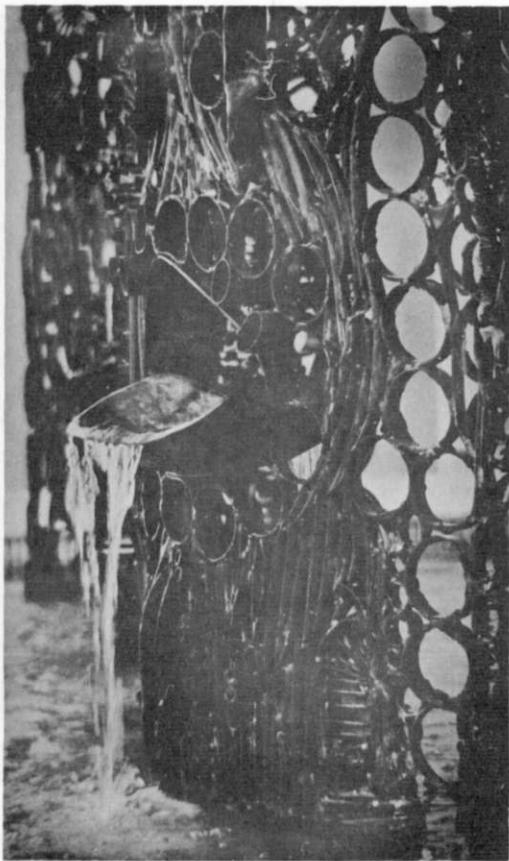
Column sculptures, Truworths, Johannesburg, 1967

Fountains, ABC Building, Durban, 1967

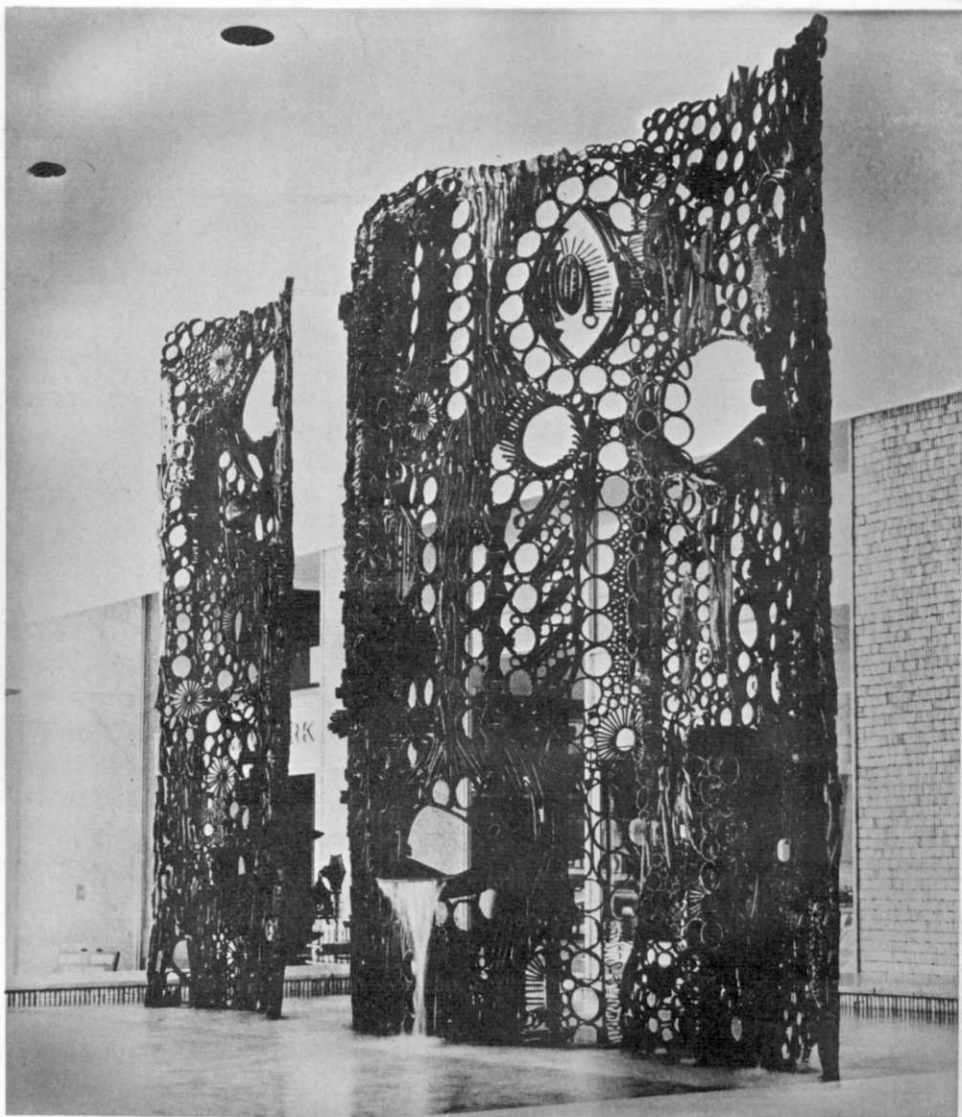
Panel, entrance foyer, National Institute for Personnel Research, Johannesburg, 1967

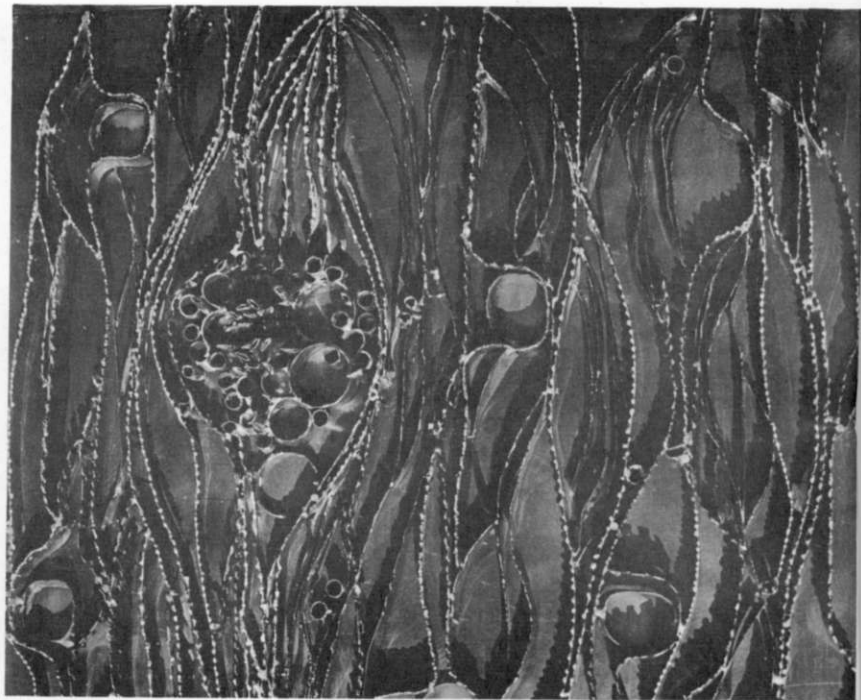
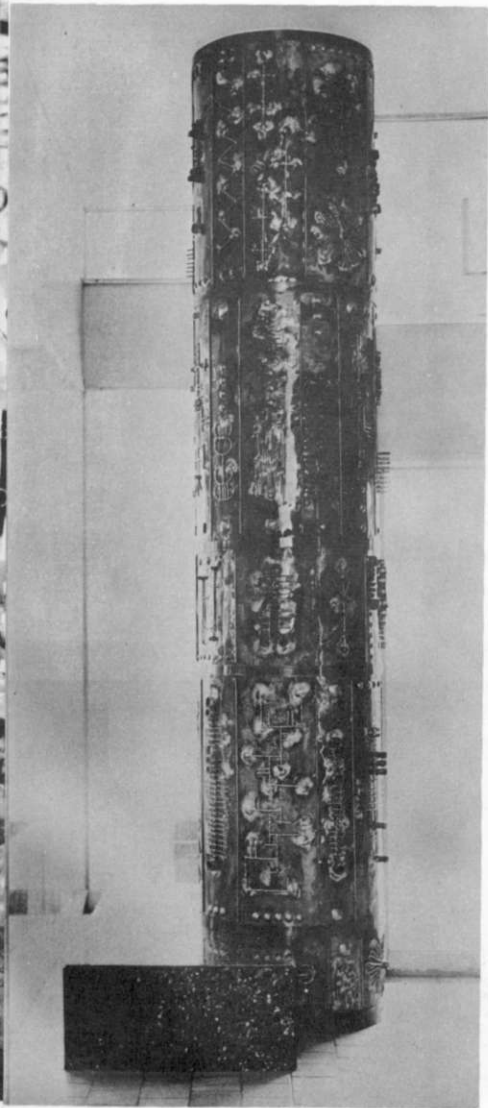
Entrance wall relief, Rolfes Factory, Germiston, 1967

Panel, Delswa Showroom, Johannesburg, 1965

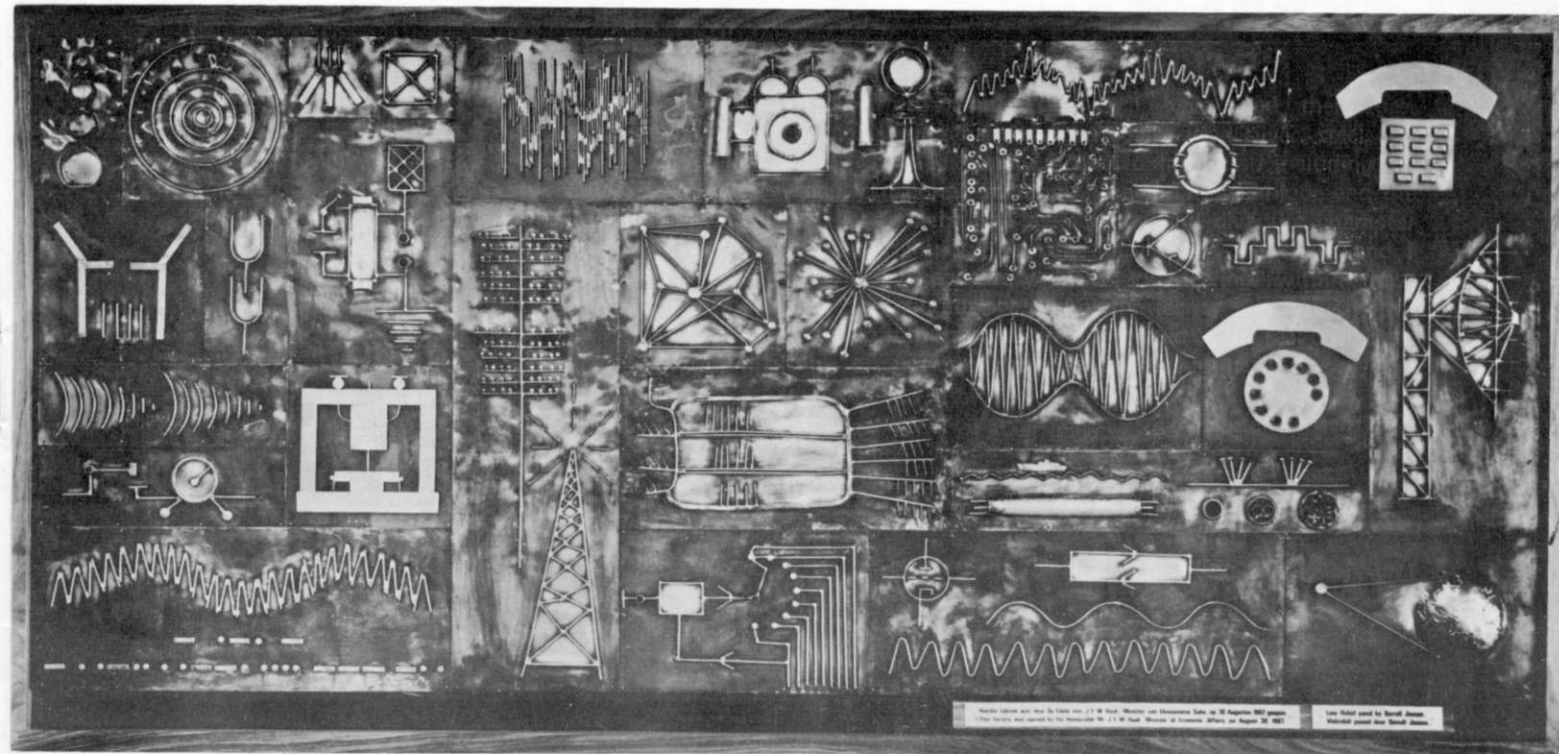


Fountain, entrance court, Nukerk Building,
Johannesburg, 1967





Column and mural, Hilsam Building, Johannesburg, 1967



Mural design and plan by Philip Lee, J. J. W. York, Worcester and Gloucestershire, Ltd., on 20 September 1962 (shown)
This mural was opened by the Worcester and Gloucestershire, Ltd., J. J. W. York, Worcester at Worcester Works, on August 20, 1967

Iron Relief panel by Bernard Smith
Relief panel also Bernard Smith

Mural, Phillips Radio Factory, Wadeville, 1967

Aluminium wall relief, front facade, New President Hotel,
Cape Town, 1968

Mural and column cladding, entrance foyer; mural, cocktail
lounge, New President Hotel, Cape Town, 1968

Mural, Boardroom, Mealie Board Building, Pretoria

Panels, entrance foyer, Zambesi House, Johannesburg, 1969

Mural, V.I.P. lounge, Jan Smuts New International Airport,
Johannesburg, 1971

Concrete panels to clad all exterior walls, Braamfontein,
Johannesburg, 1971

Garden sculpture, "Monad", Phillips Radio Factory, Wadeville, 1967



