



The Humana Angle

Mrs. Lily Sachs: from painting to sculpture

The progressive Western Transvaal town of Lichtenburg is soon to be graced by a work of art that has just been completed by a Johannesburg Jewish sculptress, Mrs. Lily Sachs. It is an ornamental fountain which will stand in a pool in the centre of the town.

The concrete fountain consists of four female figures, modelled in high relief. Four jets of water will spout from the vessels beside each figure. Resting on the



column is a large bowl, six feet in diameter, which is filled by a central jet and overflows, forming a sheet of water in front of the figures. The work took almost a year to complete.

Mrs. Sachs is the daughter of Mr. Harry Finn, of Potchefstroom, who is well known for his enthusiastic work for Zionism. Her early youth was spent in Potchefstroom, where she received very little formal training in art; but when she left school she started painting in Johannesburg, at the Art School and the University, and also studied with Maurice von Esche. Later she went to Paris and spent some time at the Grande Chaumiere, the Academie Julien and in the studio of the well known French painter, Andre Lhote.

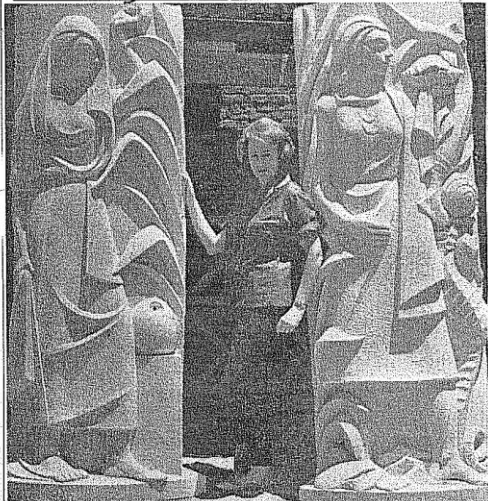
STUDENT OF KOTTLER

On her return from Paris, Mrs. Sachs found herself unhappy with painting as a means of expression and turned to sculpture, a form which she finds much more satisfying. She had the good fortune to be accepted as a student by Moses Kottler, who gave her a thorough grounding in the technique of sculpture.

Since then she has worked in her own studio, at first doing portraits and figure studies and then going on to compositions of panels in relief.

One of the first of these panels is to be seen on a public building in the foyer of the Alexander Theatre, a composition in concrete, set into the wall, depicting three lute-players. After that came two important commissions. The first was to model the four twelve-foot-high athletic figures, cast in concrete and built into the brickwork on the facade of the Hillbrow Sports Club in Claim Street, and the second was the bronze circular staircase at Re-insurance House, Commissioner Street, for which Mrs. Sachs made a frieze of twenty-two panels, the theme being South African wild life. This continuous composition of wild animals in bronze fills the entire balustrade of the staircase.

At this stage, Mrs. Sachs left for Europe on a well-deserved holiday.



Mrs. L. Sachs with two of the four figures which form the base of the column of the Lichtenburg fountain.

