

BUYS Jan

1909 —

b Rotterdam, Holland

STUDIED Rotterdam Academy; Heidelberg, Germany.

SUMMARY BIOGRAPHY 1933: first one-man exhibition, Rotterdam. Worked during WW2 for Rotterdam Archives, making drawings of the bombed city. 1949: came to SA; taught at Wits Tech Art School; member of Contemporary Art Society*, moved around the country, painting in Tvl, Natal and

Cape. 1962–65: worked in SWA; subsequently settled in Cape Town; regular exhibitions in that city.

EXHIBITIONS 1949: first SA one-man exhib, Jhb. 1952: Van Riebeeck Tercent Exhib, CT. 1966: Rep Fest Exhib, Pta.

PUBLIC COLLECTIONS SA Nat Gal, CT; Pta Art Mus; William Humphreys Gal, Kmbly; Durban Art Gal; Hester Rupert Art Mus, GR; AC White Gal, Blmftn.

During the earlier years after Jan BUYS settled in SA his work displayed distinctly romantic tendencies: he painted in rich, jewel-like colours and his themes held mystic or fantastic overtones, which sometimes recalled the paintings of Chagall, and often the earlier country scenes of the Alsatian painter, Charles Walch. When he turned his attention to the more arid landscapes of the Transvaal and, particularly during 1963–65, when he worked against the desert background of SWA, Buys began to change.

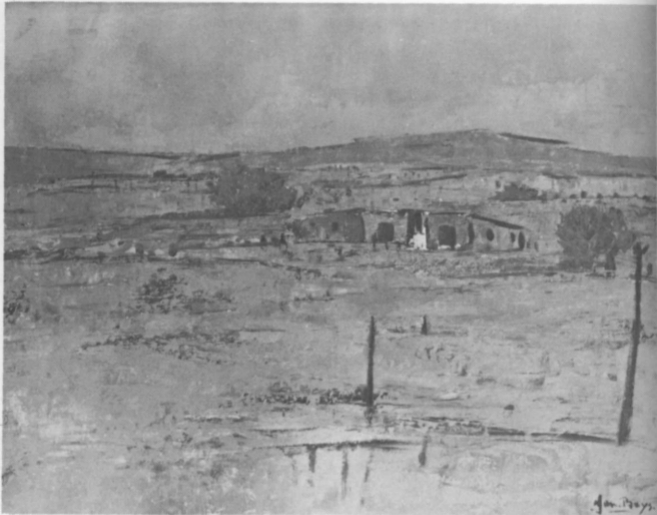
It is difficult to determine whether it is the environment itself or whether it is Adolph Jentsch's* interpretation of that environment which accounts for the resemblance of so much contemporary SWA landscape painting to the elder artist's style, but Buys was one of the many whose approach acquired affinities with Jentsch's oil paintings. His modified palette, however, remained personal and distinctive. Forsaking the saturated hues of former work, he chose to convey the hot, dry vistas of SA and SWA by concentrating on the ochre range. Although the nature of his composition alternated between convoluted contours, used in depicting mountainous regions, and horizontal zones, required by the expansive plains — *Landscape, Transvaal** — the modulated golds and tans and the accenting browns are characteristic features of most Buys canvases of the later years of his career in southern Africa.

Additional reference

'Lantern' August 1952



BUYS Jan *Village under snow* Oil 60 x 70 PAM.



BUYS Jan *Landscape, Tvl* 1964 Oil 58,5 x 76 WH.